

**DOUBLE WINDOW  
SIGHT FLOW  
INDICATOR  
[FDI - DWSFI - 207]**



**FULL VIEW SIGHT  
GLASS FLOW  
INDICATOR  
[FDI - FVSFI - 208]**



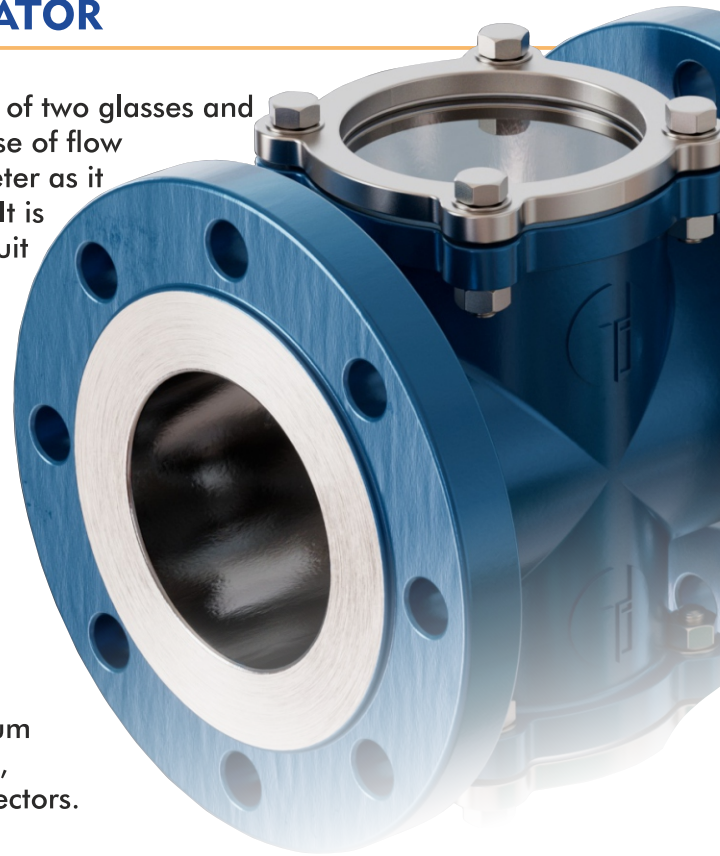
# INTRODUCTION

## DOUBLE WINDOW SIGHT FLOW INDICATOR

Double window sight glass is a simple assembly consisting of two glasses and a cast or fabricated body at two opposite sides. Use of these of flow indicator is for spot inspection and view of process parameter as it offers great dynamic visual monitoring of fluidity of fluids. It is available with various thickness and diameter of glass to suit various applications respects to fluid pressure and temperature. It allows operators to observe and monitor the industrial fluids passing through the pipeline without affecting the normal operation of the system.

As a result, it can be used in chemical towers with high temperature, strong corrosion, and easy crystallization to ensure work safety. Featured by small drive torque, and quick, easy operation, it performs good flow regulation function and has great sealing properties.

Double window sight glasses are generally applicable to pipelines with large & medium diameters and low & medium pressures, for example, it can be used to check water level, chemical, coolant and oil conditions in various industrial sectors.



## FULL VIEW SIGHT FLOW INDICATOR

Full-view sight flow indicators show the liquid level in a tank or the presence or clarity of fluids in a piping system. They are used to monitor chemical processes occurring in equipment and to detect leaks, flow interruptions, and contaminants in a system.

The Full View sight flow indicator is an in-line (crystal clear) type of sight flow indicator that is used to provide 360° viewing of material flow through a line. The 360° clear viewing area can resist clouding, cracking, and discolorations, and the flow indicator's round design helps to block collection of debris in corners. Threaded and flanged connections are available in a variety of sizes to match the diameter of the pipe being used.

FIDICON is a pioneer in the field of manufacturing Flow Measuring Instrument in India since 2002 years of designing, manufacturing, installation and service of the same. Double Window Sight Flow Indicator & Full View Sight Flow Indicator manufactured by FIDICON are user friendly and easy to install. It comes in many ranges and can be tailor made as per the requirements of customers.



## WORKING PRINCIPLE

---

Double window sight glasses are mounted on pipelines horizontally or vertically through flanges. When the fluid flows through the gauge, the colour, turbidity, and other characteristics of the fluid can be observed through the glass.

A Full sight flow indicator gives the operator a window to observe how a process fluid moves through the pipeline. At a basic level, how a sight flow indicator works is simple: just look through the window to observe the flow in a pipeline.

## APPLICATION

---

- 
- Oil Industries
  - Oil exploration
  - Gas Industries
  - Sugar Industries
  - Glass Industries
  - Power Plants
  - Mining Industries
  - Nuclear Power Plants
  - Chemical Industries
  - Copper & Aluminum Industries
  - Confectionery
  - Pesticide Industries
  - In the food industry, it is mainly used in the pipeline inspection of chocolate and sauces production processes.
  - In the chemical industry, it is mainly used to monitor the media for organic chemical production.
  - Paper Industries
  - Paint Industries
  - Fertilizer Industries
  - Ship Industries
  - Heavy engineering
  - Refineries
  - Pharmaceutical Industries
  - Steel Industries
  - Automobile Industries
  - Cement Plants
  - Food & Beverages

## MAINTENANCE

---

Isolate the sight glass and allow the pressure and temperature to reduce to ambient conditions.

- After isolation unscrew the cover bolts and remove the old gaskets and windows.
- Carefully clean the recess.
- Refit new gaskets and windows, ensuring that a gasket is fitted to either side of each window.
- Replace the covers and cover bolts and tighten to the recommended torque.
- After maintenance has been completed, isolation valves should open slowly to allow pressure and temperature to build up in a controlled manner.
- Check for leaks.

## FEATURES

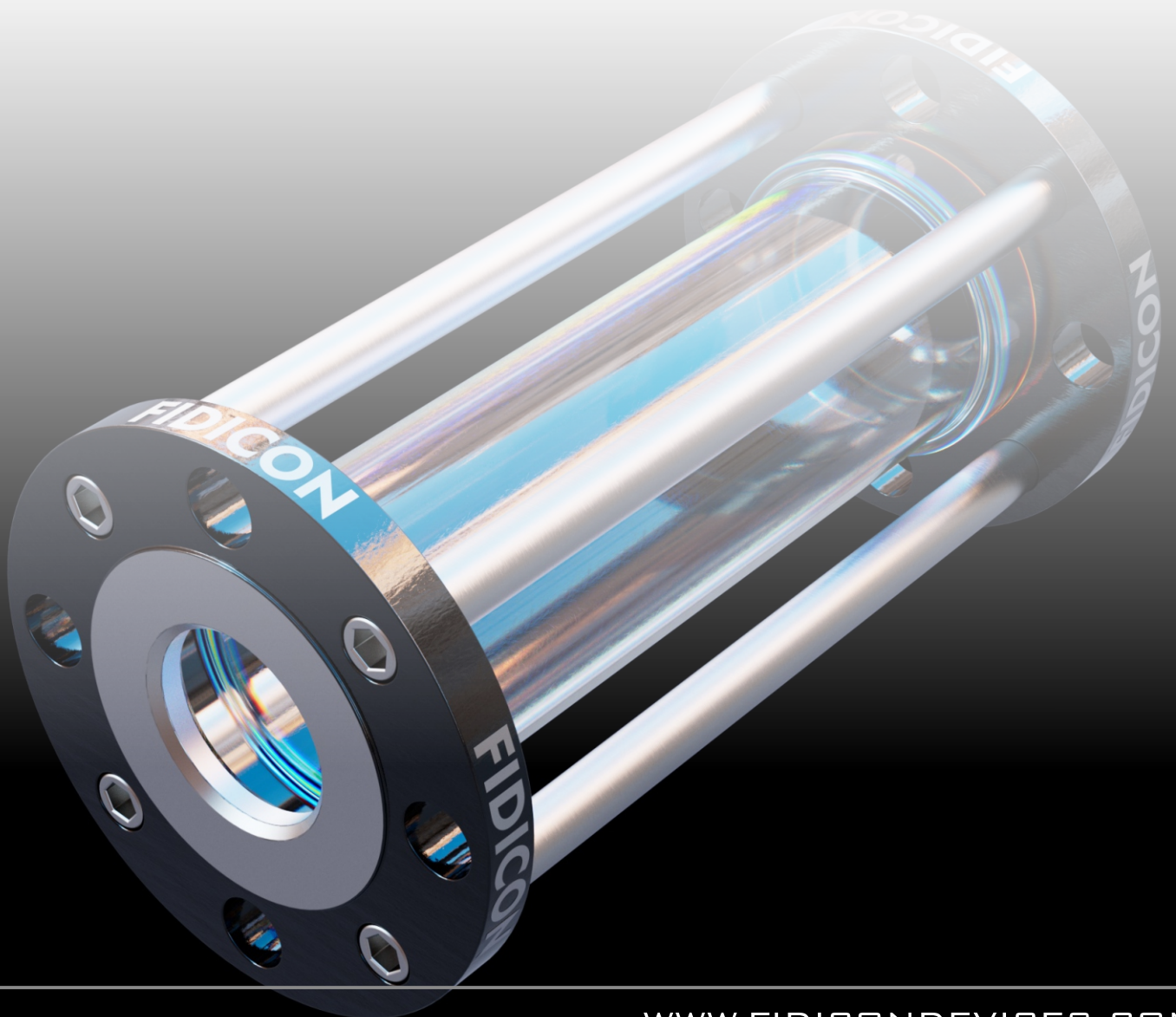
---

- It keeps fluids warm and prevent liquid from crystallizing.
- High temperature resistant and good corrosion resistant.
- Easy Maintenance
- Large View Area
- Easy installation & maintenance. Gauge glasses and the body are connected through flanges, easy to dismantle, maintain and clean.
- High accuracy. The integral structure of double window sight glass eliminates the occurrence of false level readings and improves the accuracy of observation.
- Safety guarantee. It has good sealing performance and is suitable for chemical towers with high danger factor to reduce the leakage of chemicals and safeguard the personal safety of workers.

## RECOMMENDED DISPOSAL

---

- Give it back to us & we will take care of recycling & possible disposal.
- User can dis-assemble the product in multiple stage
- The above may be handed over (state pollution board), authorized re-cycler item-wise.





## ENQUIRY SPECIFICATIONS:

- [1] Service Media Details.
- [2] Size/Connection
- [3] System Operating and Design Pressure.
- [4] System Operating and Design Temperature.
- [5] Material Specifications ( Body, Internal )

## RECOMMENDED SPARES

- [1] Glass
- [2] Gasket

## OTHER RANGE OF PRODUCTS

- [1] Flame Arrester
- [2] Breather Valve
- [3] Level Indicators
- [4] Rotameters
- [5] Emergency Relief Valve
- [6] Gauge Hatch
- [7] Strainers
- [8] Pressure Reducing Valve
- [9] Safety Relief Valve
- [10] Flowmeters
- [11] Level Switches
- [12] Pressure Reducing Station
- [13] Level Gauge, etc.

### Any Query?

Contact us to Discuss,

Phone No: +91-2646-222238/223412

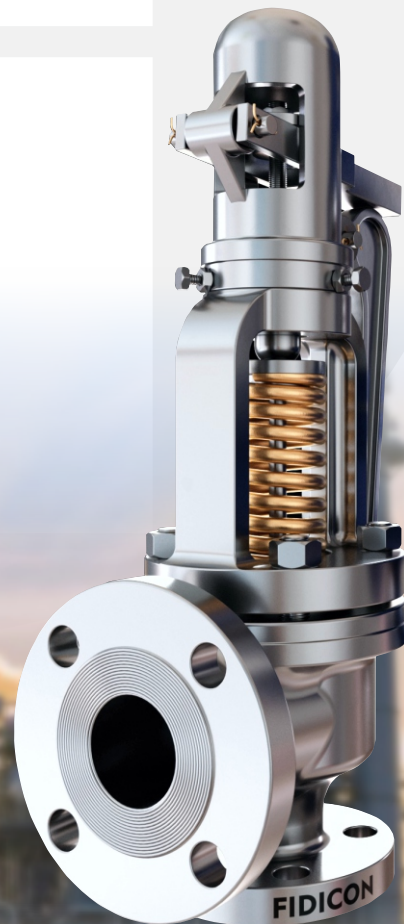
Mobile No: +91-9824418777

[sales@fidicondevices.com](mailto:sales@fidicondevices.com)

[info@fidicondevices.com](mailto:info@fidicondevices.com)

Address: Plot No. 1706/12, GIDC Ankleshwar,

Dist.: Bharuch, Gujarat, India 393002.



\*The given content on this manual could be change any time without prior notice. \*All the rights reserved by Fidicon only. Reproduction, transmission of this documents in any form or by any means without the written permission of Fidicon is prohibited. \*All legal disputes will be subjected to Ankleshwar Jurisdiction.

\*All Rights and Modifications Reserved in accordance with ISO 16016.